



MARRACCINI METAMORFOSI

La cultura al centro
in centro

SITUAZIONE ATTUALE

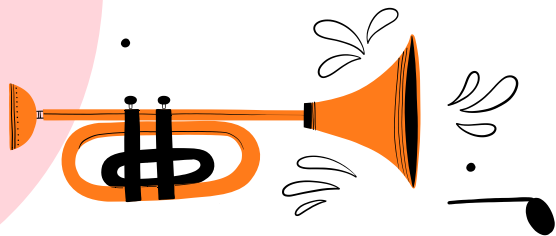
COSTI



BUROCRAZIA



SERVICE



**UNO SPAZIO
CULTURALE
PER ESIBIRSI**









TARGET



**ARTISTI E
COMPAGNIE**



**AGENZIE DI
SPETTACOLO**



PUBBLICO



RISORSE NECESSARIE



PALCO

Modulabile



SERVICE

Audio, Luci, Video,
Effetti speciali



SEDUTE

Tribune telescopiche
Sedie mobili



BAR

Bar aperto
durante gli eventi

TEAM

**DIREZIONE
GENERALE**



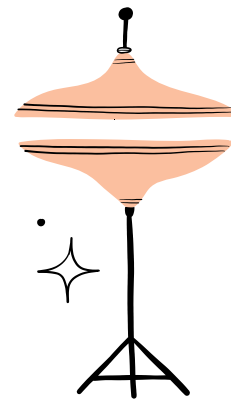
**DIREZIONE
ARTISTICA**



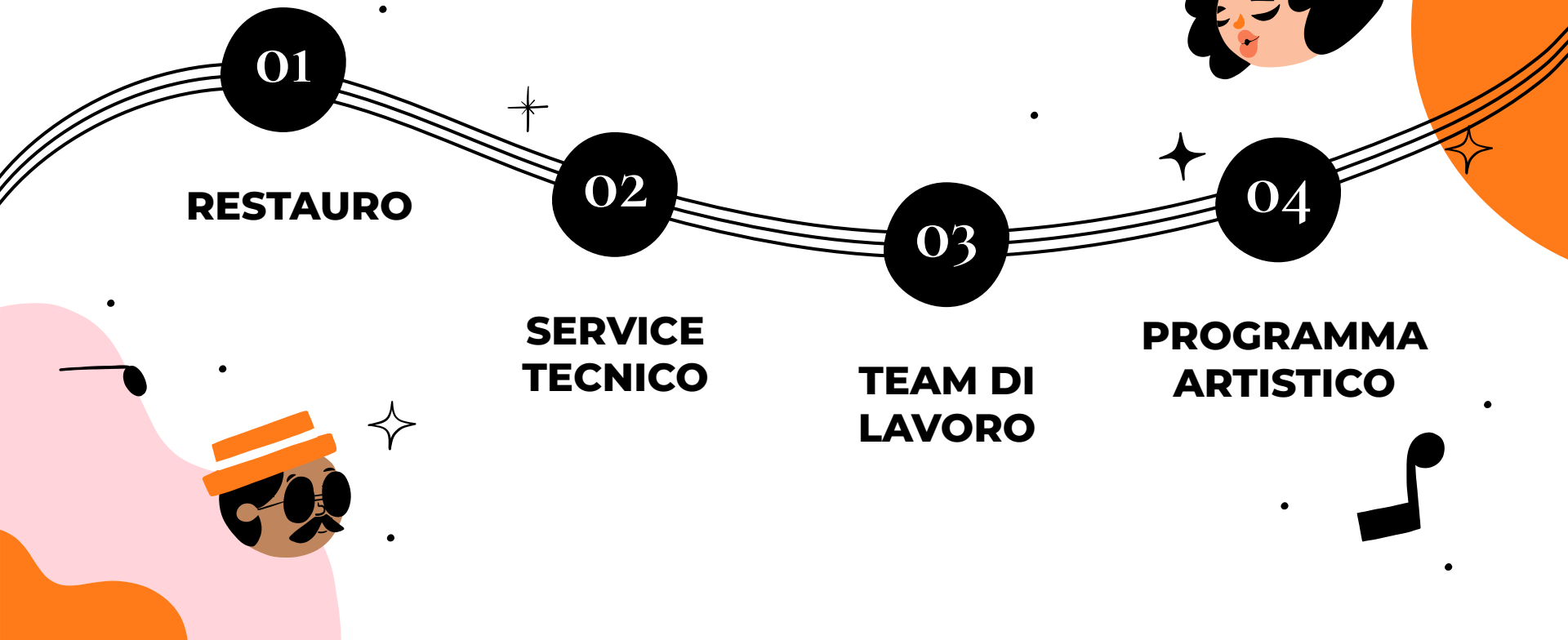
**DIREZIONE
TECNICA**



**DIREZIONE
SICUREZZA**



STEP NECESSARI



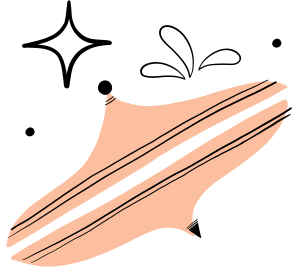
COSTI

INVESTIMENTO

Ristrutturazione
Allestimento

OPERATIVITÀ

Personale
Manutenzione
Utenze



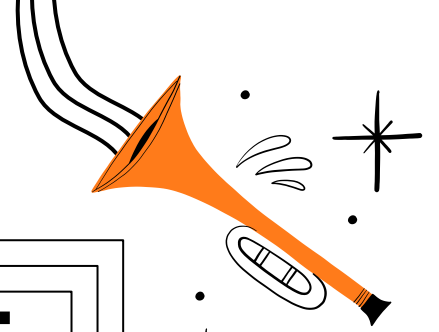
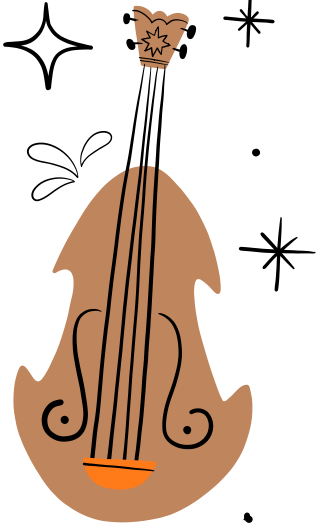
RICAVI

AFFITTO SPAZI

Artisti
Agenzie di
Spettacolo

TICKET & BAR

Pubblico
Spettatori
Visitatori



CARATTERISTICHE

ORIGINALE

— Medie
dimensioni

POLIFUNZIONALE

— Allestimento
adattabile

TECNOLOGICO

— Strumentazione
innovativa

VANTAGGI

+ARTE

Vicinanza
alla cultura

+TURISMO

Maggior
offerta
culturale

+LAVORO

Più
possibilità
per artisti



A man in a red suit is seen from behind, standing on a stage and conducting. He is holding a baton in his right hand and gesturing with his left. The stage is dark, with two spotlights illuminating the scene from above. A red chair with the brand name 'REINHARTER' is visible in the foreground. The background is a dark, curved wall.

**Che la metamorfosi
abbia inizio**

A man in a red suit is seen from behind, standing on a stage. He is gesturing with his right hand towards the right. The stage is dark, with a blue spotlight illuminating the background. A red chair with the brand name 'REINHARTER' is visible in the foreground. A large text overlay is positioned on the right side of the image.

**Che la metamorfosi
abbia inizio**